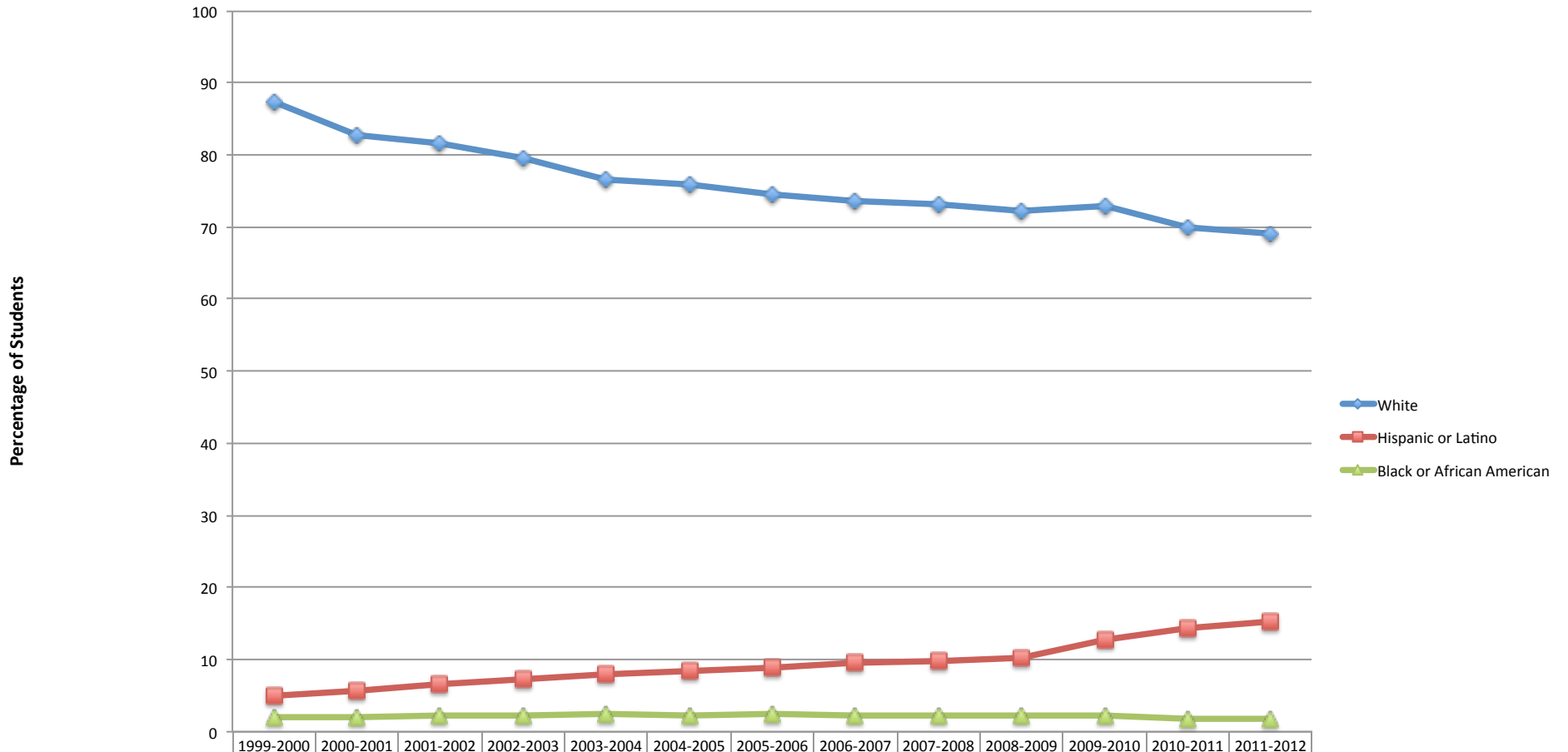


Eugene-Springfield Metro Area School Districts



	1999-2000	2000-2001	2001-2002	2002-2003	2003-2004	2004-2005	2005-2006	2006-2007	2007-2008	2008-2009	2009-2010	2010-2011	2011-2012
White	87.26	82.67	81.56	79.44	76.47	75.89	74.43	73.57	73.1	72.33	72.98	69.87	69.09
Hispanic or Latino	4.96	5.77	6.52	7.24	7.87	8.37	8.82	9.5	9.88	10.28	12.75	14.26	15.18
Black or African American	1.99	2.1	2.26	2.32	2.5	2.27	2.41	2.36	2.29	2.34	2.35	1.8	1.68

Source: Oregon Department of Education; <http://www.ode.state.or.us/sfda/reports/r0067Select.asp>